

**Analysis of Rate of Ordinary Cement Concrete (ANNEXURE - II,FORMAT-A)  
for  
KATWA MUNICIPALITY**

NAME OF DISTRICT*		Purba Bardhaman/Paschim Bardhaman		CONCRETE PROPORTION=		1:1½:3					
Description of Items:-							Total Rs./cum.				
step-1	Rate of Item as per relevant section of FWD Bldg. Schedule [It. - 10, vide p-13(3rd corrigenda)]					Rs	4,243.00				
step-2	Cost of Stone aggregate of diff. grading at nearest RLY. Ward as per (Table - 1, P-308/309) (Consumption required for one cum of Concrete vide P-B60, sl no-3.)	20 mm	0.573 cum.	Rs	1,156.00	Rs	662.39				
		10 mm	0.287 cum.	Rs	1,025.00	Rs	294.18				
step-3	Cost of Carriage of Stone aggregate as per consumption required for one cum concrete as per (Table-2, P-310)	20 mm	0.573 cum.	Rs	648.50	Rs	371.59				
		10 mm	0.287 cum.	Rs	648.50	Rs	186.12				
step-4	Cost of Loading & unloading of stone aggregate bellow 40 mm nominal size. (Table -3, P-311)						0.860 cum.	Rs	58.00	Rs	49.88
Rate of 1:1½:3 Concrete per CU.M.=							Rs	5,807.16			

Burdwan In.	rail yard to Work Site distance=	60	KM
carriage	Cost/KM	Total	
0-5	124	Rs	124.00
5 to 10	10.9	Rs	54.50
10 to 20	10.1	Rs	101.00
20 to 50	9.5	Rs	285.00
50 to 100	8.4	Rs	84.00
>100	7.9	Rs	-
Total cost of carriage=		Rs	648.50

**CONTRACTOR SUPPLY (P-305), Annexure-1,Format-A(6th Corrigenda)**

	Quantity		Rs. /MT	Total Rs./cum.
Rate as per schedule=	cum	MT	South Bengal	Rs 5,807.16
Deduction of cost of cement	0.286	0.4118	Rs. 6,289.00	Rs. -2,589.81
Add cost of cement	0.286	0.4118	Rs. 5,717.00	Rs. 2,354.26
	TOTAL=			Rs. 5,571.61

  
Sub-Assistant Engineer  
Katwa Municipality

  
Assistant Engineer  
Katwa Municipality

  
Chairman  
Katwa Municipality

**Analysis of Rate of Reinforcing Steel Supplied by Contactor  
(Annexure -1, Format-B) for  
Katwa Municipality**

NAME OF DISTRICT=	Bardhaman	TYPE OF STEEL=	OTHER MANUFACTURERS NOT SPECIFIED		
GRADE OF STEEL=	Fe-415				
Description of Items:-		M.F	COST	AMOUNT/MT	
step-1	Rate of item as per relevant section of PWD Bldg. Schedule. = [It no- 40.a.i (page-44) ]	1.00	58515	Rs. 58,515.00	
step-2	Deduct issue rate (per MT) of respective quality of Steel including 10% contractor profit, 2% sundries, water charges & 5% wastages X1.17=	1.17	-41589	-Rs. 48,659.13	
step-3	Add basic price at outlet of steel of respective quality of Steel including 10% contractor profit, 2% sundries, water charges & 5% wastages X1.17=	1.17	36750	Rs. 42,997.50	
step-4	Cost of carriage from outlet to site for 1.05 of steel= (Table-1, P-230, R&B)	1.05	Rs 707.50	Rs. 742.88	
step-5	Cost of loading unloading charges for 1.05 of steel= (Chapter-1, 1.03_h, P-228, R&B)	1.05	72	Rs. 75.60	

**TOTAL= Rs. 53,671.85**

kolkata	outlet to Work Site distance=	110
carriage	Csot/KM	Total
0-5	82	Rs 82.00
5 to 10	7.3	Rs 36.50
10 to 20	6.7	Rs 67.00
20 to 50	6.3	Rs 189.00
50 to 100	5.6	Rs 280.00
>100	5.3	Rs 53.00
Total cost of carriage=		Rs 707.50

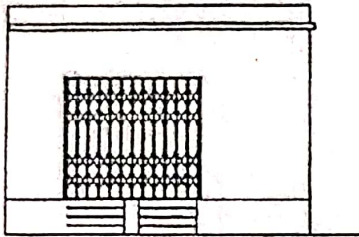
*(Signature)*  
Sub-Assistant Engineer  
Katwa Municipality

*(Signature)*  
Assistant Engineer  
Katwa Municipality

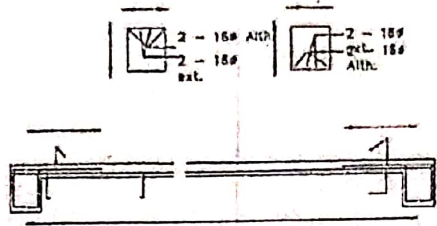
*(Signature)*  
Chairman  
Katwa Municipality



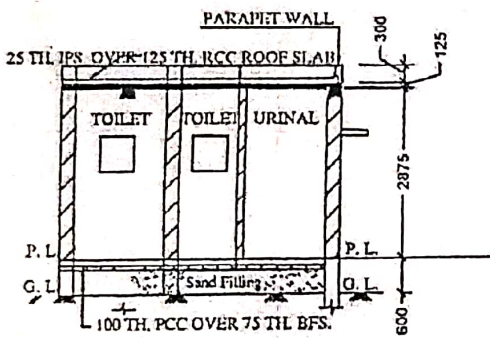
MODEL DRAWING FOR CONSTRUCTION OF C. T./P.T.  
TOILET SEATS 2 NOS URINAL 3 NOS  
MODEL NO.- F



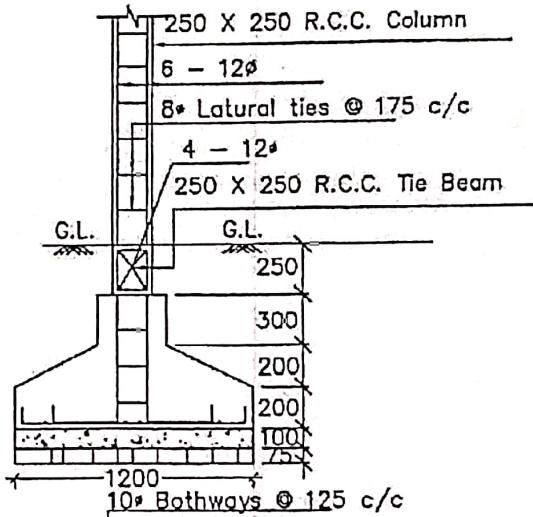
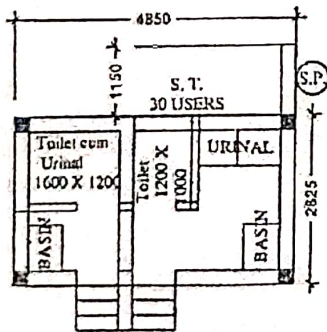
FRONT ELEVATION



Details Of R.C.C Roof Slab & Beam  
(SCALE - 1 : 25)



SECTION - 'A - A'



DETAILS OF R. C. C COLUMN  
(SCALE - 1 : 25)

- BULK HEAD LIGHT → 03
- TUBE LIGHT → 03
- EXHAUST FAN → 03
- OUTDOOR LIGHT → 01
- CEILING FAN → 01
- GLOW SIGN BOARD → 01

Checked & Verified

*Prabir Mukherjee*  
Engineer (CIVIL)  
HILL INSPIRATION



*Prabir*  
Sub-Assistant Engineer  
Katwa Municipality

*Bpal*  
Assistant Engineer  
Katwa Municipality

*[Signature]*  
Chairman  
Katwa Municipality

12 p/s