

CONSTRUCTION OF PUBLIC TOILET (PT) AT DHUPGURI MUNICIPAL PLAY GROUND IN WARD NO.-12, UNDER DHUPGURI MUNICIPALITY,  
MODEL NO - A

CONSTRUCTION OF TOILET BLOCK (CT/PT) MODEL NO - A,  
TOILET SEAT- 5 NOS AND URINAL- 5 NOS, NON SCHEDULE ITEMS.

SL.NO	Item Description & Item No.	Quantity	Rate	Unit	Amount
1	Non Shedule Item Sl. No. 91-106 ( Order as per SUDA) standard plastic dustbin (12lits)	5	350	Each	1750.00
2	Sinage APC based & Reflective vinyl	5	3776	each	18880.00
3	Supplying and fixing sinage with fixing stand post for public toilet for visible to passersby	5	1000	Each	5000.00
4	Glow Sign board Name and contact details of the following are displayed prominently - Toilet Identification number, name of ULB under which jurisdiction toilet is coverwd, ward number and maintainance authority prominently displayed for each toilet block supervisor, supervisor's agency and area sanitary inspector.	1	5000	each	5000.00
5	Installation of Sinage	1	2071	each	2071.00
6	Air freshner(pack of 4nos)	8	216	Each	1728.00
7	Air freshner (Napthaline 250 gm)	5	210	Each	1050.00
8	Supplying paper Napkin	10	50	Each	500.00
9	Supplying Sanitary Napkin ( Whisper or similar make 50 pcs )	5	520	Each	2600.00
10	Harpic (blue 500 ml)	5	300	Each	1500.00
11	Harpic (Red 500 ml)	5	150	Each	750.00
12	Gala double lip floor wiper	5	350	Each	1750.00
13	Colin glass or surface cleaner	4	200	Lit	800.00
14	Muriatic Acid	4	145	Lit	580.00
15	Bleaching powder	5	120	Kg	600.00
16	Dettol ,lifeboy or similar make liquid soap	8	140	Lit	1120.00
17	Rubber hand gloves	6	80	Pair	480.00
18	Double side plastic brush	6	125	Each	750.00
19	Plastic Broom	4	170	Each	680.00
20	SMS/any other ICT based feedback system ( With number displayed on which SMS has to be sent )	1	5000	each	5000.00
21	Mini Tulu Pump	1	4000	each	4000.00
22	supplying roaster /register for keeping acoount of regular cleanig	3	200	Each	600.00
23	Lettering on Toilet Wall for display of name and contact details of ULB ward number and name of maintainance authority, saniinspector, etc.	1	1000	each	1000.00
			<b>TOTAL</b>	<b>Rs.</b>	<b>58189.00</b>
				Add L.W.C. @1.0%	581.89
				Total payable Amount Including L.W.C.	<b>58770.89</b>
				Add Contengency @3%	1745.67
				Total payable Amount Including L.W.C. and contengency	<b>60516.56</b>
				Say Rs.	<b>60517.00</b>

Chairperson  
Board of Administrators  
Dhupguri Municipality

Sub-Assistant Engineer  
Dhupguri Municipality

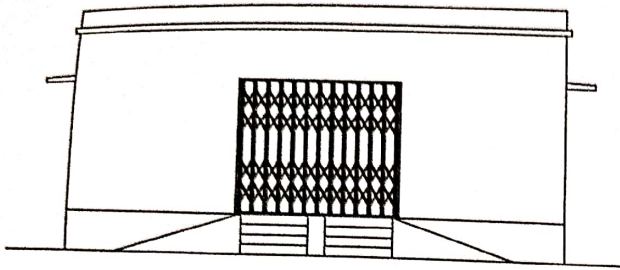
25.05.25  
Junior Engineer  
Jalpaiguri Division M.E. Dte.

Assistant Engineer  
Jalpaiguri Division M.E. Dte.

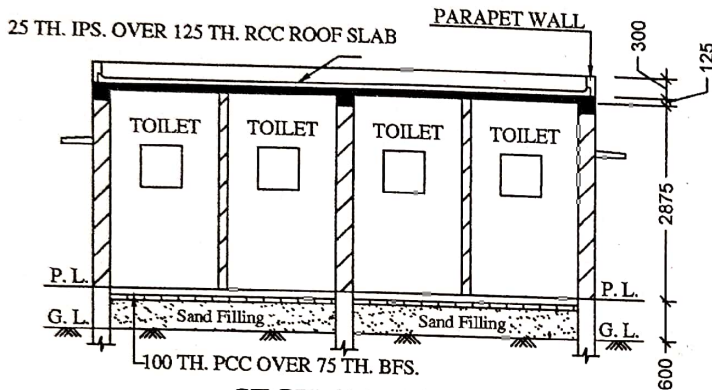
Executive Engineer  
Jalpaiguri Division M.E. Dte.



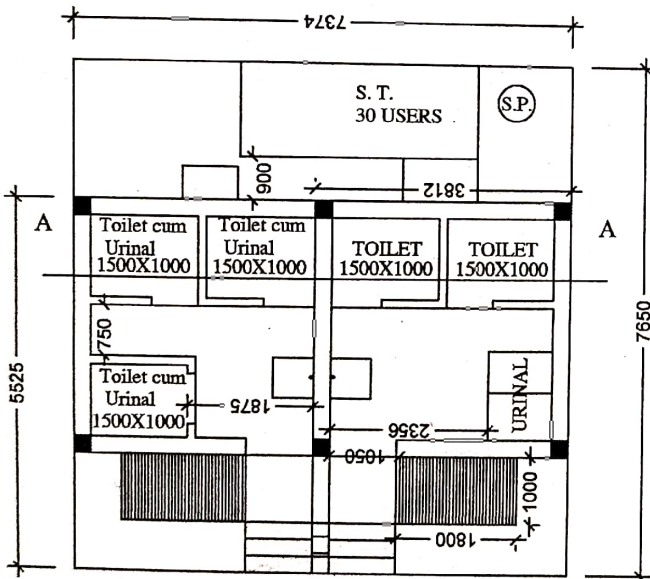
# MODEL DRAWING FOR CONSTRUCTION OF C. T./P.T. Toilet Seats - 5 Nos Urinal 5 Nos MODEL NO.- A



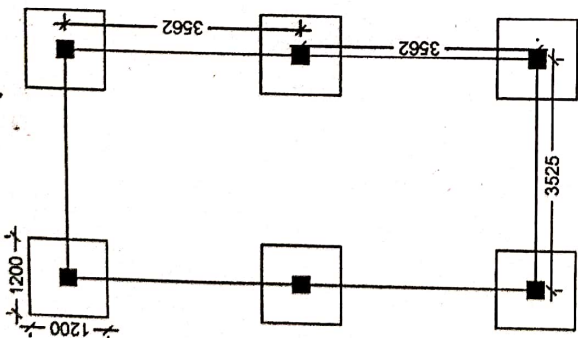
FRONT ELEVATION



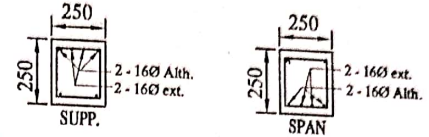
SECTION - 'A - A'



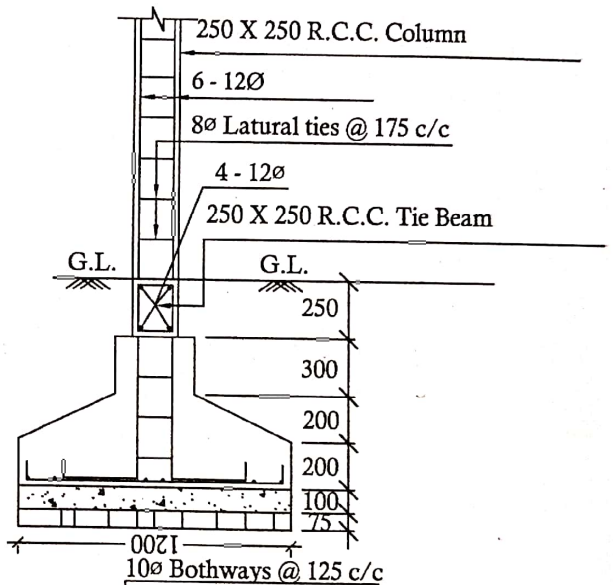
PLAN



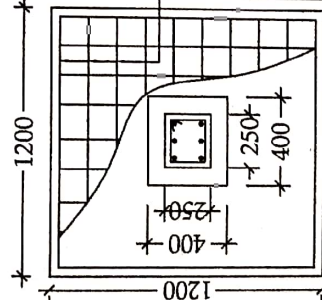
LAYOUT PLAN



Details Of R.C.C Roof Slab & Beam  
(SCALE - 1 : 25)



DETAILS OF R. C. C COLUMN  
(SCALE - 1 : 25)



Chairperson  
Board of Administration  
Dhugguri Municipality

Sub-Assistant Engineer  
Dhugguri Municipality