

ESTIMATE FOR INSTITUTIONAL COMMUNITY TOILET AT ISLAMPUR HIGH SCHOOL (UNIT 2), WARD NO-11 UNDER ISLAMPUR MUNICIPALITY, MODEL NO - F, NON SCHEDULE WORKS

SL.NO	Item Description & Item No.	Quantity	Rate	Unit	Amount
1	Non Shedule Item Sl. No. 91-106 (Order as per SUDA) standard plastic dustbin (12lits)	5	350	Each	1750.00
2	Sinage APC based & Reflective vinyl	5	3776	each	18880.00
3	Supplying and fixing sinage with fixing stand post for public toilet for visible to passersby	5	1000	Each	5000.00
4	Glow Sign board Name and contact details of the following are displayed prominently - Toilet Identification number , name of ULB under which jurisdiction toilet is coverwd , ward number and maintanance authority prominently displayed for each toilet block supervisor, supervisor's agency and area sanitary inspector.	1	5000	each	5000.00
5	Installation of Sinage	1	2071	each	2071.00
6	Air freshner(pack of 4nos)	8	216	Each	1728.00
7	Air freshner (Napthaline 250 gm)	5	210	Each	1050.00
8	Supplying paper Napkin	5	50	Each	250.00
9	Supplying Sanitary Napkin (Whisper or similar make 50 pcs)	4	520	Each	2080.00
10	Harpic (blue 500 ml)	4	300	Each	1200.00
11	Harpic (Red 500 ml)	4	150	Each	600.00
12	Gala double lip floor wiper	4	350	Each	1400.00
13	Colin glass or surface cleaner	2	200	Lit	400.00
14	Muriatic Acid	2	145	Lit	290.00
15	Bleaching powder	4	120	Kg	480.00
16	Dettol ,lifeboy or similar make liquid soap	8	140	Lit	1120.00
17	Rubber hand gloves	6	80	Pair	480.00
18	Double side plastic brush	6	125	Each	750.00
19	Plastic Broom	4	170	Each	680.00
20	SMS/any other ICT based feedback system (With number displayed on which SMS has to be sent)	1	5000	each	5000.00
21	Mini Tulu Pump	1	4000	each	4000.00
22	supplying roaster /register for keeping accoount of regular cleanig	3	200	Each	600.00
23	Lettering on Toilet Wall for display of name and contact details of ULB ward number and name of maintanance authority , saniinspector, etc.	1	1000	each	1000.00
				Rs.	55809.00
	Add for Labour welfare Cess @ 1 %			Rs.	558.00
			Total	Rs.	56367.00
	Add for Contingency @ 3 %			Rs.	1674.00
	(Fifty Eight Thousand Forty One)		TOTAL	Rs.	58041.00

[Signature]
Junior Engineer
 Dinajpur Division
 M. E. Directorate
 Deptt. of U. D. M. A.
 Govt. of West Bengal
Municipal Civil Engineer
 C.L.T.C.
 Islampur Municipality

MAY BE VETTED

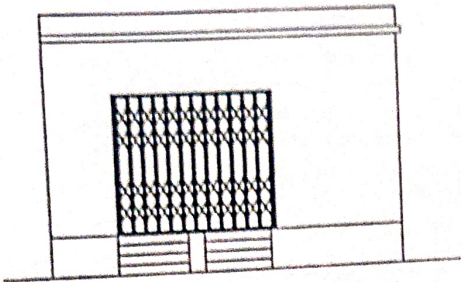
[Signature] 28/7/25
Assistant Engineer
 Dinajpur Division
 M. E. Directorate
 Deptt. of U.D.M.A.
 Govt. of West Bengal

VETTED

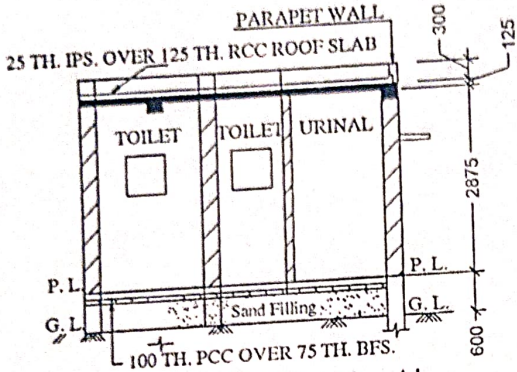
[Signature]
Executive Engineer
 Dinajpur Division
 M. E. Directorate
 Islampur Municipality
 Islampur, Uttar Dinajpur
 Deptt. of Municipal Affairs
 Govt. of West Bengal

[Signature]
Chairman
 Islampur Municipality

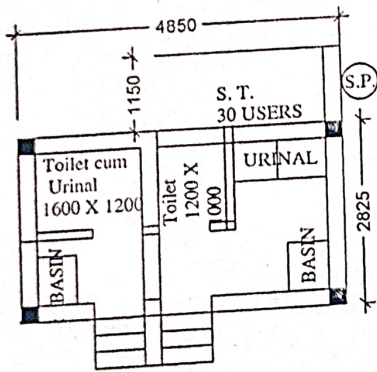
MODEL DRAWING FOR CONSTRUCTION OF C. T./P.T.
 TOILET SEATS 2 NOS URINAL 3 NOS
 MODEL NO.- F



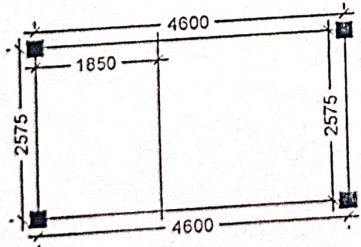
FRONT ELEVATION



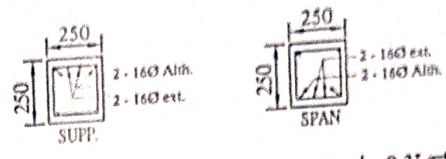
SECTION - 'A - A'



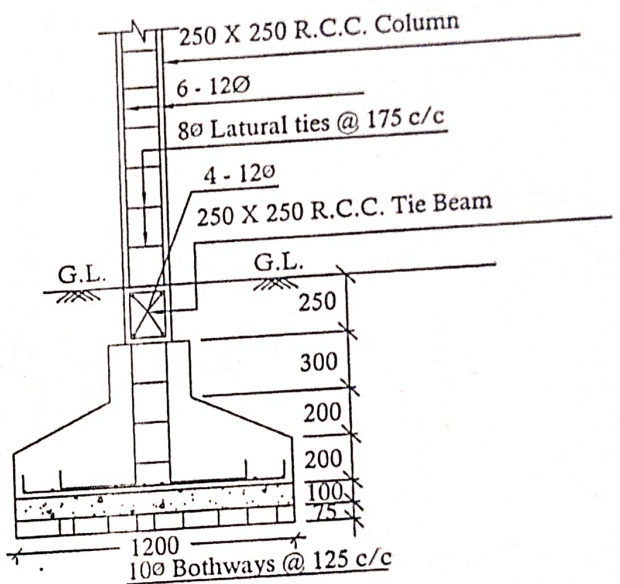
PLAN



LAYOUT PLAN



Details Of R.C.C Roof Slab & Beam
 (SCALE - 1 : 25)



DETAILS OF R. C. C COLUMN
 (SCALE - 1 : 25)

Signature
 Municipal Civil Engineer
 C.L.T.C.
 Islampur Municipality

Signature
 Chairman
 Islampur Municipality
 Islampur, Uttar Dinajpur